

The Gocator® 2490 Legal for Trade Packaging & Logistics Measurement Solution with NTEP Certification



LMI offers an *NTEP LFT-certified solution for the accurate data capture of **multi-dimensional measurements** (LxWxH) used in the calculation of dimensional weight for parcels in the shipping industry and for warehousing and logistics applications.

* Certification applies to the USA only. You can review the official certificate of conformance [on the NTEP website](#).

Sensor Specifications

| | | | |
|--------------------------------|---------------------------------------------------------------------------|--------------------------|-------------------------|
| NTEP Certificate Number | 22-095 | Product Model | Gocator® 2490A-2-R-16-T |
| Device Type | Multiple Dimension Measuring Device | Field of View | 38 inches (965 mm) |
| Application | Cuboidal objects moving on a conveyor belt, separated by 4 inches or more | Mounting Distance | 73 inches (1854 mm) |
| Measurement | Length, Width, and Height | Measurement Range | 38 inches (965 mm) |

Package Specifications

| Axis ID | d _{min} | Minimum Dimension | Maximum Dimension | Minimum Belt Speed | Maximum Belt Speed |
|---------------|------------------|-------------------|-------------------|--------------------------|--------------------|
| Length | 0.2 inches | 2.4 inches | 120.0 inches | Start / Stop 0 ft/min | 500 ft/min |
| Width | 0.2 inches | 2.4 inches | 36.0 inches | | |
| Height | 0.1 inches | 1.2 inches | 36.0 inches | | |

LFT Solution Includes



**Gocator® 2490A-2-R-16-T
Laser Profile Sensor**



Linear Wheel Encoder



**Legal for Trade Gocator Conveyor
Utility**



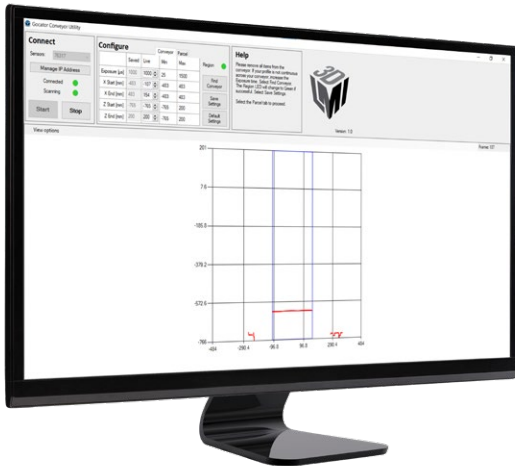
Smart Display

- Wide field of view, single 3D sensor can be used on conveyors up to 38 inches wide
- Easy to set up and run (~30 minutes) using pre-configured job files
- Communicates measurements directly to Smart Display described below
- Spring loaded for easy integration with existing conveyor systems
- Encoder signal initiates 3D line profile capture for precise synchronization with belt movement
- PC-based utility for adjusting the measurement region of the sensor to match the conveyor
- Visualization of laser profile used during Zero operation
- Visualization of 3D surface used for package dimensioning
- Standalone touchscreen for sensor control and display of parcel dimensions
- Provides the user interface, reports alignment status, allows the user to trigger alignment
- Reports measurements out of range and clears alignment if the sensor temperature changes by 5 degrees or more

SOLUTIONS SETUP AND DEPLOYMENT

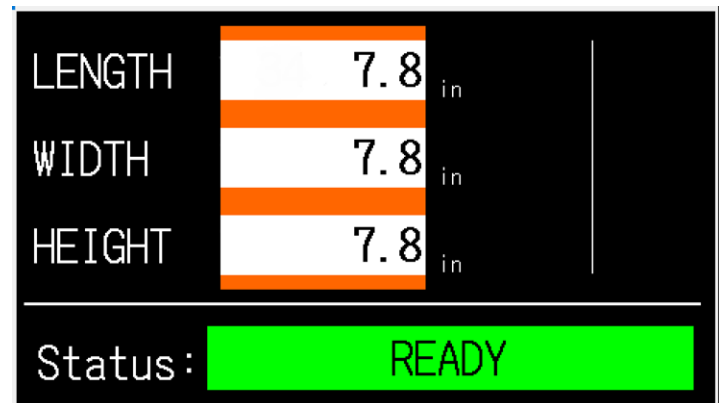
CONVEYOR CONFIGURATION

The Gocator Conveyor Utility is used to adapt the sensor to any conveyor up to 38 inches wide. The utility is used during installation and requires a Windows machine with an Ethernet connection.



PACKAGE MEASUREMENT

The Smart Display is used to report measurements captured by the sensor. It provides a touchscreen interface for the operator to Zero and Clear sensor alignment. The Smart Display will clear alignment automatically if ambient temperature drifts by 5 degrees or more.



FOR SYSTEM INTEGRATORS AND SOLUTION PROVIDERS

USE GOCATOR 2490 TO DEVELOP CUSTOM LFT-CERTIFIED SYSTEMS

Customers interested in deploying a Legal for Trade dimensioning system at multiple sites, or integrated in an OEM machine, can purchase all components from LMI or source the required encoder and measurement display from a third-party supplier. Standalone, the Gocator 2490 is an ultra wide field of view laser profiler that is ideal for package dimensioning applications.

ABOUT GOCATOR 2490

- Large field of view and measurement range allows the system to adapt to the conveyor, mounting and package requirements
- Able to support conveyor speeds of up to 500 feet/minute, 24 hours per day, 7 days a week
- Certified to measure packages within 0.2 inches in length and width and 0.1 inches in height

BENEFITS TO THE SYSTEM INTEGRATOR

- Out-of-the-box LFT-certified device for accurate dimensional measurement
- Built-in Modbus support for communication with the Smart Display
- Smart display program for Legal for Trade conformant measurement output is available upon request

ON-SENSOR JOBFILES

The Gocator 2490 Legal for Trade sensor from LMI includes custom jobfiles that perform dimensioning on-sensor. These files are locked and cannot be accessed. OEM customers developing their own outbound dimensioning system can purchase the 2490 standard product and implement the same functionality. Please contact LMI to learn more.

- Preconfigured jobfiles are used for alignment and measurement
- Sensor reports profile width to conveyor configuration utility
- Sensor outputs dimensions to Smart Display over Modbus

